


BOM: F-PH-1801530-014

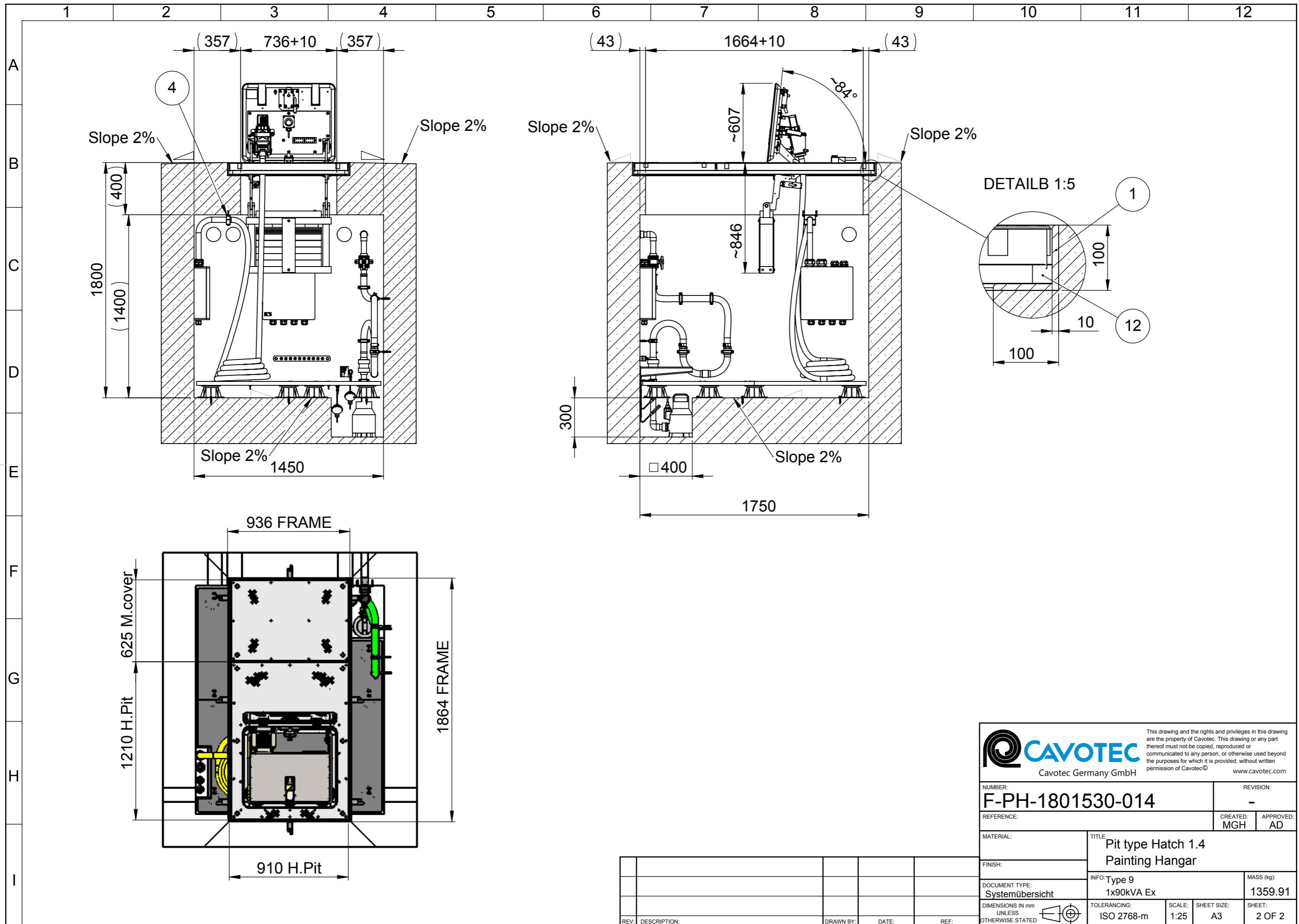
POS.	NUMBER	DESCRIPTION NAV 2	INFO NAV 2	QTY.
1	F64-01-1-01-0030	Main Frame Hatch-Pit	S235JR Hot-dipgalvanized	1
2	F64-04-1-00-0000	Maintenance cover compl.	910x625x60 S355 standard	1
3	F-PHM-1801530-014	Pit type hatch 1.4	1x90kVA Ex - Shop assembly	1
4	F64-95-6-01-0001	Cable strain relief D48	for 400Hz Jetcable	1
5	F64-04-9-49-0017	Floor grid GRP complete	for concrete chamber	1
6	F14-51-9-00-0012	Drain pipe for Ex Pump	Adapter Ø50mm	1
7	F14-51-9-00-0055	Siphon complete	for water connection	1
8	F64-00-2-90-0000	Set adjustment screws	Standard HP+2xPCA PP	1
9	F91-39-5-10-0000	Fender washer f.M10	A2	1
10	F99-54-6-10-0000	Concrete dowel M10	ss	1
11	F71-21-8-13-1853	Wall Bracket AW 30/410		1
12	F95-03-0-12-2530	Foam tape 30x25mm	7,5m	1
13	F97-52-0-00-6320	Pipe clamp D44-49	M8	2
14	F97-35-5-08-0802	Stair bolt M8x80	A2 type 23ES	2
15	F99-50-8-10-0000	Dowel D10		2
16	F73-70-1-12-1172	Equipotential busbar Ex	Ex	1
17	FEH50-1801530-014	50 Hz termination box	Ex	1
18	FEH40-1801530-014	400 Hz termination box	Ex	1
19	F13-50-2-01-0000	Sump pump	Ex	1
20	F13-50-2-02-0000	Float switch	for Ex pump	2
21	Jetcabel 400Hz	Jetcabel 400Hz		1
22	Connector 400Hz	Connector 400Hz		1



This drawing and the rights and privileges in this drawing are the property of Cavotec. This drawing or any part thereof must not be copied, reproduced or communicated to any person, or otherwise used beyond the purposes for which it is provided, without written permission of Cavotec® [www.cavotec.com](http://www.cavotec.com)

NUMBER: <b>F-PH-1801530-014</b>		REVISION: -	
REFERENCE:	CREATED: MGH	APPROVED: AD	
MATERIAL:	TITLE: <b>Pit type Hatch 1.4 Painting Hangar</b>		
FINISH:	INFO: Type 9 1x90kVA Ex		MASS (kg): <b>1359.91</b>
DOCUMENT TYPE: Systemübersicht	TOLERANCING: ISO 2768-m	SCALE: 1:15	SHEET SIZE: A3
DIMENSIONS IN mm UNLESS OTHERWISE STATED			SHEET: 1 OF 2

REV.	DESCRIPTION:	DRAWN BY:	DATE:	REF:



**CAVOTEC**  
Cavotec Germany GmbH  
www.cavotec.com

This drawing and the rights and privileges in this drawing are the property of Cavotec. This drawing or any part thereof must not be copied, reproduced or communicated to any person, or otherwise used beyond the purposes for which it is provided, without written permission of Cavotec®

NUMBER: <b>F-PH-1801530-014</b>	REVISION: -
REFERENCE:	CREATED: MGH APPROVED: AD
MATERIAL:	TITLE: <b>Pit type Hatch 1.4 Painting Hangar</b>
FINISH:	INFO: Type 9 1x90kVA Ex MASS (kg): <b>1359.91</b>
DOCUMENT TYPE: Systemübersicht	TOLERANCING: ISO 2768-m
DIMENSIONS IN mm UNLESS OTHERWISE STATED	SCALE: 1:25 SHEET SIZE: A3 SHEET: 2 OF 2