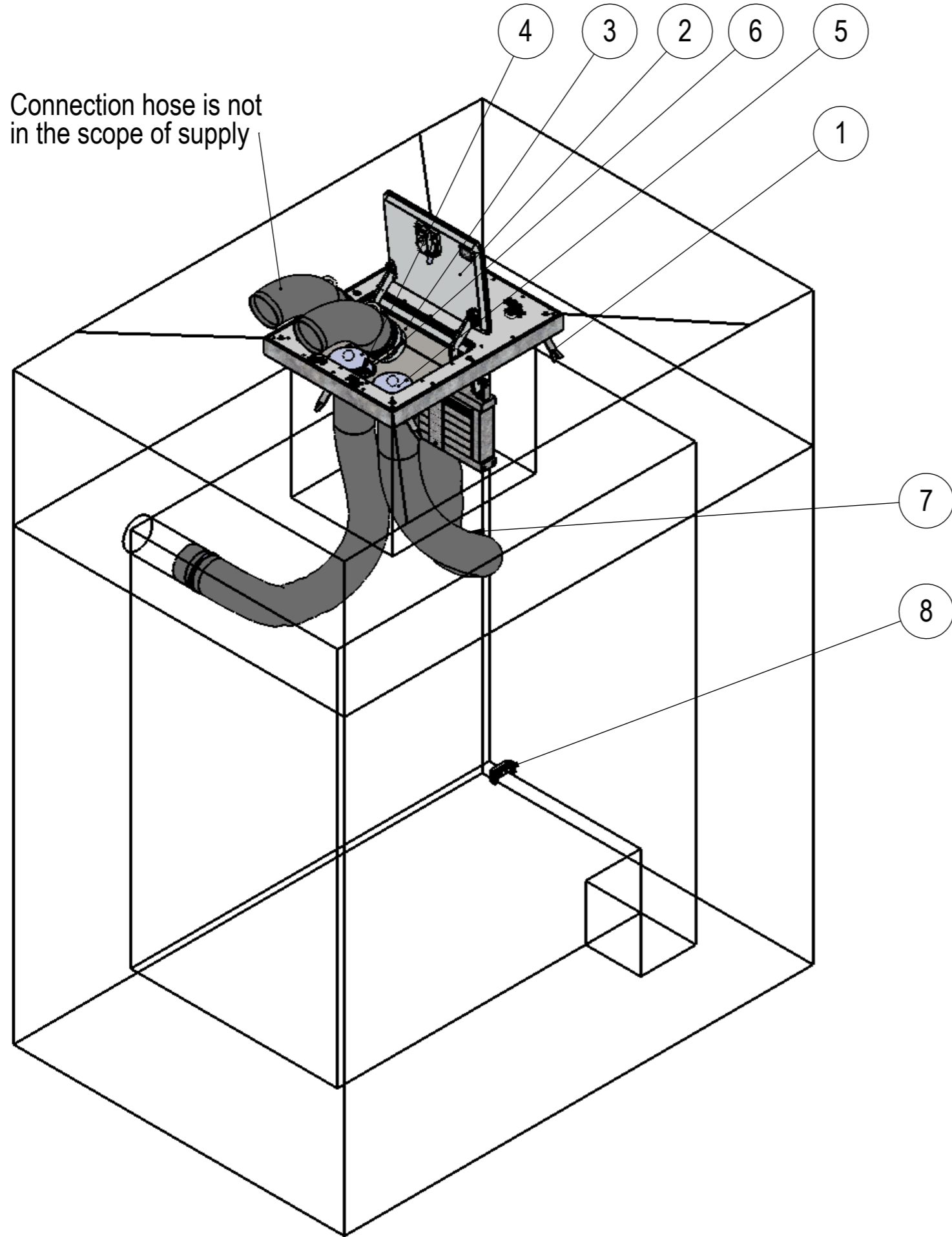


Connection hose is not in the scope of supply



F-PH-P1364-2-003\_TC

POS.	Number	Beschreibung1	Description1	QTY.
1	F64-01-1-01-0010	Fundamentrahmen verz.	Main frame	1
2	F-PHS-01-02-00	Hatch-Pit Sandproof	Hatchpit sandproof	1
3	F64-34-2-20-0038	Geräteträger Klapp-Pit	Devices holder Hatch-Pit	1
4	F64-04-5-22-0010	Rattengitter komplett	Anti-Rat plate	2
5	F14-34-3-25-0000	Verschlussdeckel D205x20	Plug adapter D205x20	2
6	F64-95-3-30-0000	Anschlusskupplung kpl.	Coupling compl.	2
7	F97-88-7-03-0200	Schlauch Tankentl.D=203	Hose Fuel Ventilation Ø203	2
8	F73-70-1-12-1170	Potentialschiene	Potential bus bar	1

**Technical Clarification**

Delivery times are intended from the approval of drawing by the customer.

Approval Date

Signature

Tolerance according to DIN ISO 2768 "middle" and "H"  
Surface DIN ISO 1302 Row 2

Scale: 1:25 Weight: 780 kg

	Date	Name
made by	01.02.2017	BH
checked	01.02.2017	RB
drawing	01.02.2017	BH

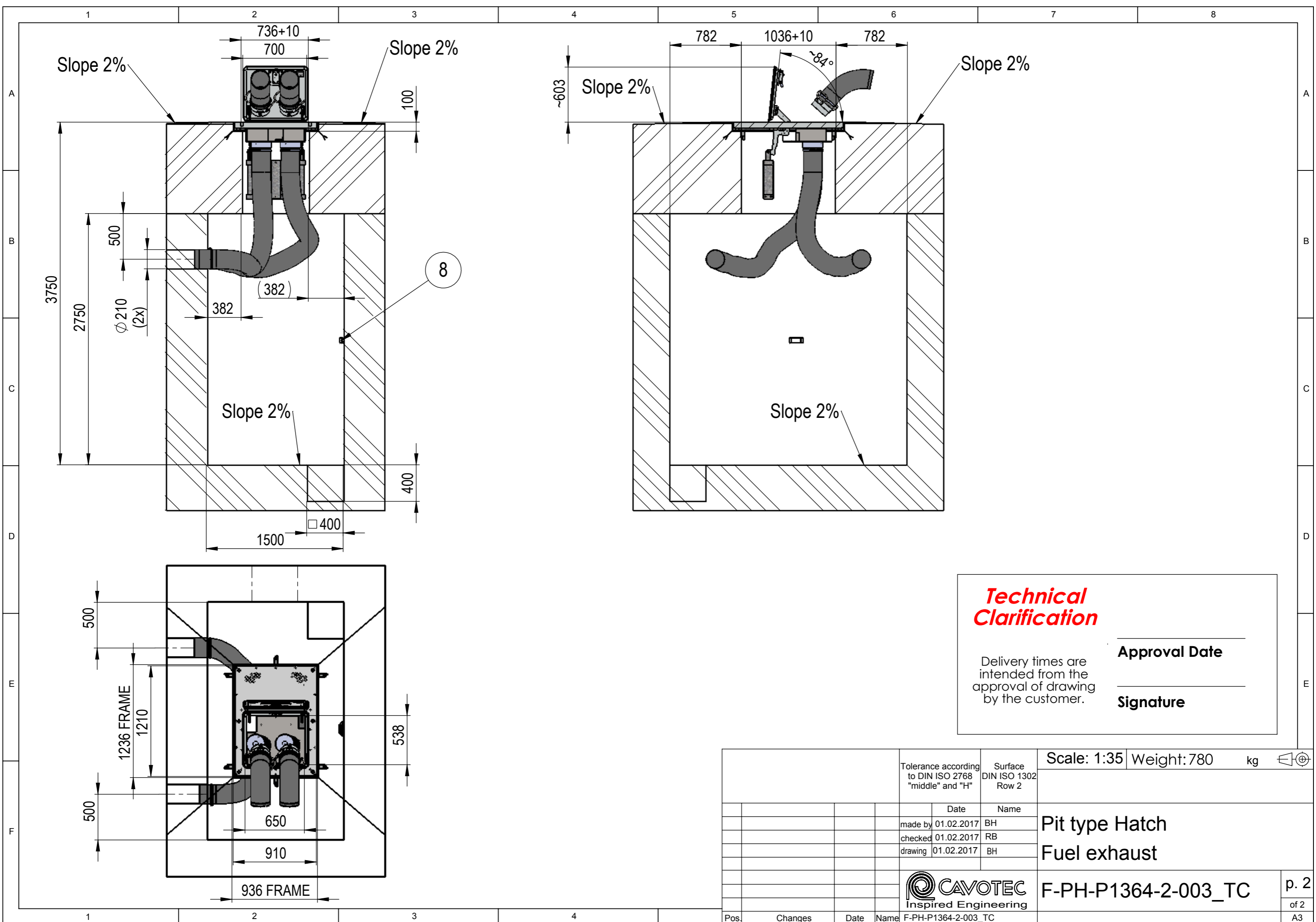
Pit type Hatch  
Fuel exhaust



F-PH-P1364-2-003\_TC

p. 1  
of 2  
A3

Pos.	Changes	Date	Name
			F-PH-P1364-2-003_TC



**Technical Clarification**

Delivery times are intended from the approval of drawing by the customer.

Approval Date \_\_\_\_\_

Signature \_\_\_\_\_

Tolerance according to DIN ISO 2768 "middle" and "H"		Surface DIN ISO 1302 Row 2	Scale: 1:35	Weight: 780 kg	
Date	Name				
made by	01.02.2017	BH	<b>Pit type Hatch</b> <b>Fuel exhaust</b>		
checked	01.02.2017	RB			
drawing	01.02.2017	BH			
<b>CAVOTEC</b> Inspired Engineering		<b>F-PH-P1364-2-003_TC</b>		p. 2 of 2 A3	
Pos.	Changes	Date	Name	F-PH-P1364-2-003_TC	